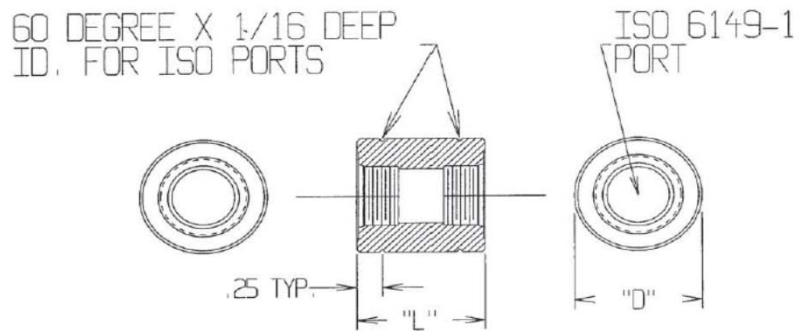


ISO 6149-1 COUPLING



PART NO.	ISO PORT		D	L
	THREAD	MIN. TREAD LENGTH		
ATC-M8-X2	M8 X 1	0.400	5/8	7/8
ATC-M10-X2	M10 X 1	0.400	3/4	1
ATC-M12-X2	M12 X 1.5	0.460	7/8	1-1/4
ATC-M14-X2	M14 X 1.5	0.460	1	1-3/8
ATC-M16-X2	M16 X 1.5	0.510	1-1/4	1-1/2
ATC-M18-X2	M18 X 1.5	0.580	1-1/4	1-1/2
ATC-M22-X2	M22 X 1.5	0.625	1-1/2	1-3/4
ATC-M27-X2	M27 X 2	0.770	1-3/4	2
ATC-M33-X2	M33 X 2	0.770	2-1/4	2-3/8
ATC-M42-X2	M42 X 2	0.790	2-1/2	2-5/8
ATC-M48-X2	M48 X 2	0.875	2-5/8	2-3/4
ATC-M60-X2	M60 X 2	0.970	3-1/2	2-3/4